



PT-1000 G

1,000 MILE ROAD & TRAIL RUNNING SHOE



TECHNICAL ZONE - Lateral View

U-Heel: Anatomically shaped around heel & ankle to aid fit & help prevent Achilles tendonitis.

SOLITE EVA

SOCKLINER

Enhanced removable moulded EVA sockliner for additional comfort & support.

FORCE DYNAMIC
SYSTEM

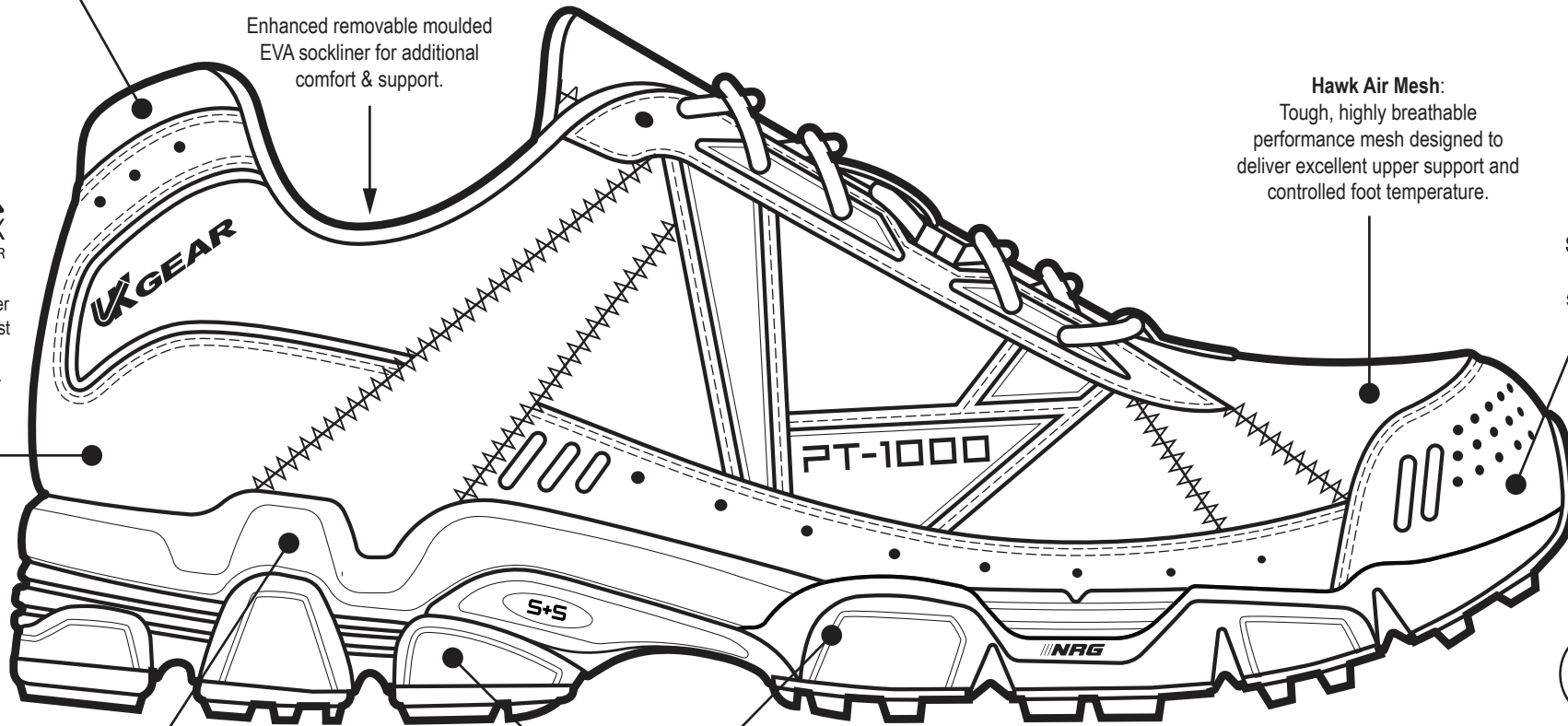
UK Gear ForceDynamic System (FDS) is the culmination of 8 years of research & development work with the military. This classified technology is built on a foundation of proprietary compounds and materials - designed to deliver exceptional durability and comfort with no compromise on biomechanical performance.

Hawk Air Mesh:
Tough, highly breathable performance mesh designed to deliver excellent upper support and controlled foot temperature.

Synthetic Leather:
Provides additional strength & durability to upper.



RHINOFLEX
HEEL COUNTER
(Inside) Flexible and responsive heel counter moulded around the last to ensure perfect anatomical alignment.



G 55 | 65

G-Numbers: Refers to the grade of Dureva that determine midsole density, shock absorption and stability. These grades are fine-tuned to optimise the performance and durability of the shoes in a specific environment.



Dureva: A proprietary midsole material built on a unique molecular structure. Found exclusively in UK Gear footwear Dureva provides unmatched sustained cushioning and support thereby dramatically extending the lifespan of the shoe!

ANTI-MICROBIAL
TREATMENT ●●●

Designed to inhibit the growth of bacteria, fungus & other odour-causing microbes. Gives long-lasting hygienic freshness.



All-Round Reflectivity:
Enhances visibility in low light & aids road running safety.



PT-1000 SC

1,000 MILE ROAD & TRAIL RUNNING SHOE



TECHNICAL ZONE - Medial View



UK Gear ForceDynamic System (FDS) is the culmination of 8 years of research & development work with the military. This classified technology is built on a foundation of proprietary compounds and materials - designed to deliver exceptional durability and comfort with no compromise on biomechanical performance.



Enhanced removable moulded EVA sockliner for additional comfort & support.

U-Heel: Anatomically shaped around heel & ankle to aid fit & help prevent Achilles tendonitis.

Hawk Air Mesh:

Tough, highly breathable performance mesh designed to deliver excellent upper support and controlled foot temperature.

Protective Toe Guard:

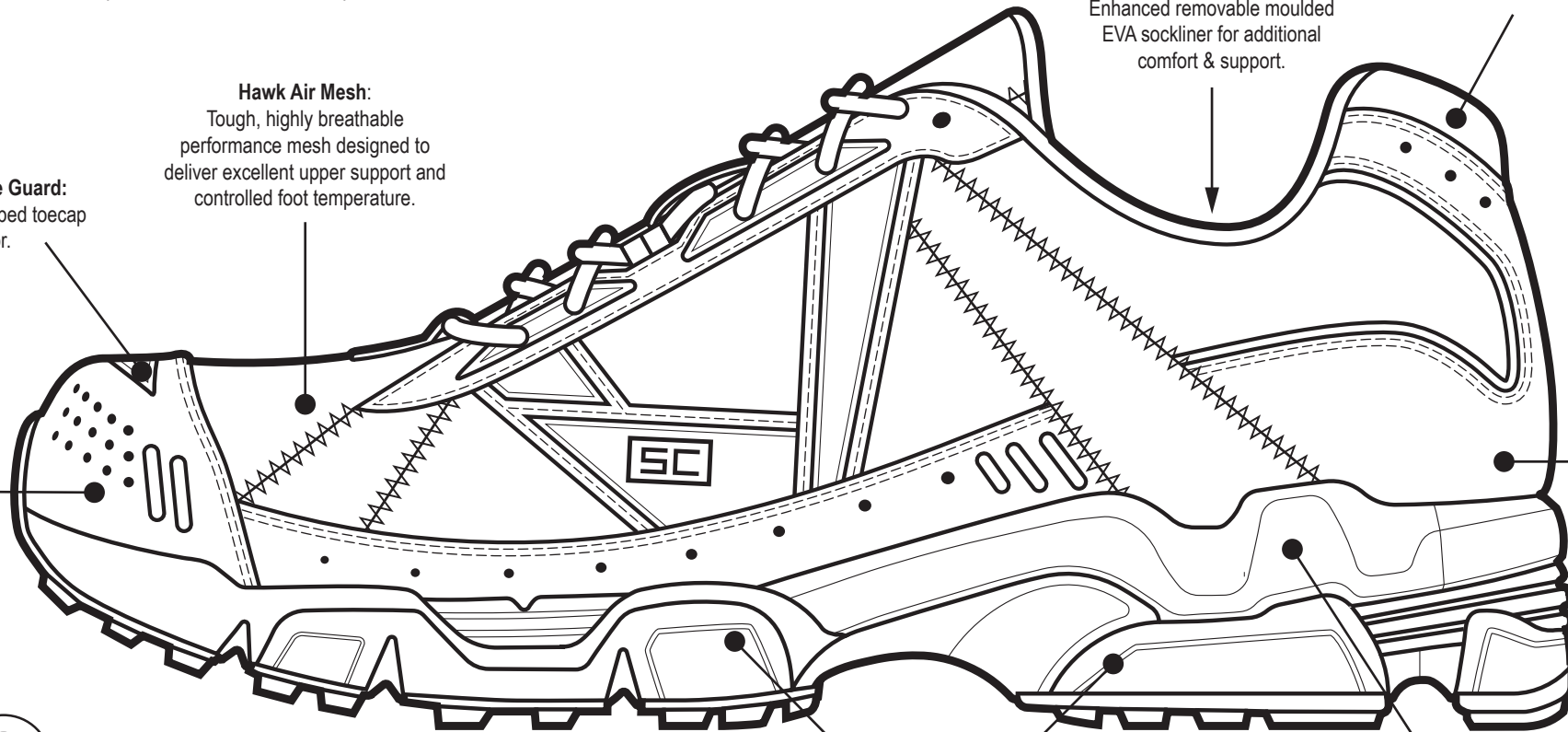
Anatomically shaped toecap protector.

Synthetic Leather:

Provides additional strength & durability to upper.



(Inside) Flexible and responsive heel counter moulded around the last to ensure perfect anatomical alignment.



All-Round Reflectivity:

Enhances visibility in low light & aids road running safety.



Designed to inhibit the growth of bacteria, fungus & other odour-causing microbes. Gives long-lasting hygienic freshness.



Dureva: A proprietary midsole material built on a unique molecular structure. Found exclusively in UK Gear footwear Dureva provides unmatched sustained cushioning and support thereby dramatically extending the lifespan of the shoe!



G-Numbers: Refers to the grade of Dureva that determine midsole density, shock absorption and stability. These grades are fine-tuned to optimise the performance and durability of the shoes in a specific environment.



PT-1000

1,000 MILE ROAD & TRAIL RUNNING SHOE



TECHNICAL ZONE - Outsole View



UK Gear ForceDynamic System (FDS) is the culmination of 8 years of research & development work with the military. This classified technology is built on a foundation of proprietary compounds and materials - designed to deliver exceptional durability and comfort with no compromise on biomechanical performance.



Strengthening & Stabilising moulded TPU mid-foot support bridge. Strengthens & stabilises both the mid & forefoot in the gait cycle.

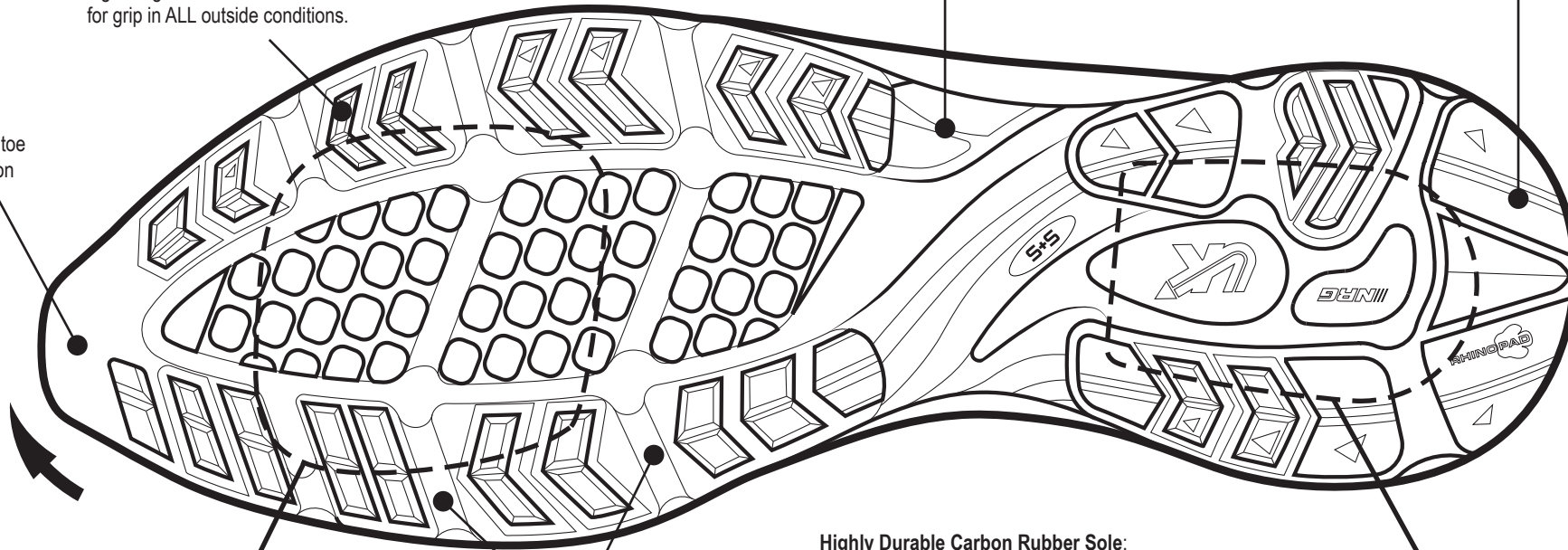


UK Gear's ultra-tough & abrasion resistant heel landing pads.

Directional Traction Lugs:

Lightweight & durable carbon rubber for grip in ALL outside conditions.

Wrap-Over toe end traction



(Inside) Highly-responsive technical FOREFOOT compound inlaid to compliment you foots Natural Energy Return during 'toe-off'.



Anatomically enhanced construction for excellent flexibility, comfort and energy-return through the gait cycle.

Highly Durable Carbon Rubber Sole: Using deep traction lugs, non-marking and easy clean. Ideally suited for both road and off road running.



(Inside) Super-absorption blown HEEL compound with a unique molecular structure that gives sustained cushioning, inlaid to minimise impact through the body.