



# XC-09

CROSS-COUNTRY RUNNING SHOE



TECHNICAL ZONE - Lateral View

**U-Heel:** Anatomically shaped around heel & ankle to aid fit & help prevent Achilles tendonitis.

**Woven Heel Pull:**  
For rapid 'doff & doff'



(Inside) Flexible and responsive heel counter moulded around the last to ensure perfect anatomical alignment.

**ANTI-MICROBIAL TREATMENT** ●●●

Designed to inhibit the growth of bacteria, fungus & other odour-causing microbes. Gives long-lasting hygienic freshness.

**SOLITE EVA SOCKLINER**

Enhanced removable moulded EVA sockliner for additional comfort & support.

Luxury Fully Padded tongue

**Fitted Tongue Lace Loops:**  
Ensure tongue remains in place at ALL times.



**UK Gear's 4 Stage Shock Absorption & Flexibility System:**

1. Solite EVA Mid-Sole
2. Solite EVA Sockliner
3. NRG Reactor Pads
4. NRG Impact Pads

**Fortress Mesh:**  
Highly durable, breathable, high-performance mesh designed to regulate foot temperature.

XC-09

**Strategic Paneling:** For side foot structural support. 3M Reflective logo on lateral panel.

**SOLITE EVA MID-SOLE**

A unique EVA compound which gives a lightweight midsole and enhances durability & cushioning.



**All-Round Reflectivity:**  
Enhances visibility in low light & aids road running safety.



# XC-09

CROSS-COUNTRY RUNNING SHOE



TECHNICAL ZONE - Medial View



**UK Gear's 4 Stage Shock Absorption & Flexibility System:**

1. Solite EVA Mid-Sole
2. Solite EVA Sockliner
3. NRG Reactor Pads
4. NRG Impact Pads



**All-Round Reflectivity:**  
Enhances visibility in low light & aids road running safety.

**Fortress Mesh:**  
Highly durable, breathable, high-performance mesh designed to regulate foot temperature.

**Fitted Tongue Lace Loops:**  
Ensure tongue remains in place at ALL times.

Luxury Fully Padded tongue

**SOLITE EVA**  
SOCKLINER

Enhanced removable moulded EVA sockliner for additional comfort & support.

**U-Heel:** Anatomically shaped around heel & ankle to aid fit & help prevent Achilles tendonitis.



**(Inside) Flexible and responsive heel counter moulded around the last to ensure perfect anatomical alignment.**

**ANTI-MICROBIAL TREATMENT** ●●●

Designed to inhibit the growth of bacteria, fungus & other odour-causing microbes. Gives long-lasting hygienic freshness.

**SOLITE EVA**  
MID-SOLE

A unique EVA compound which gives a lightweight midsole and enhances durability & cushioning.

**Strategic Paneling:** For side foot structural support. 3M Reflective logo on lateral panel.

**G 55 | 65**

**G-Numbers:** Refers to the grade of SoLite EVA that determine midsole density, shock absorption and stability. These grades are fine-tuned to optimise the performance and durability of the shoes in a specific environment.



**XC-09**  
CROSS-COUNTRY RUNNING SHOE

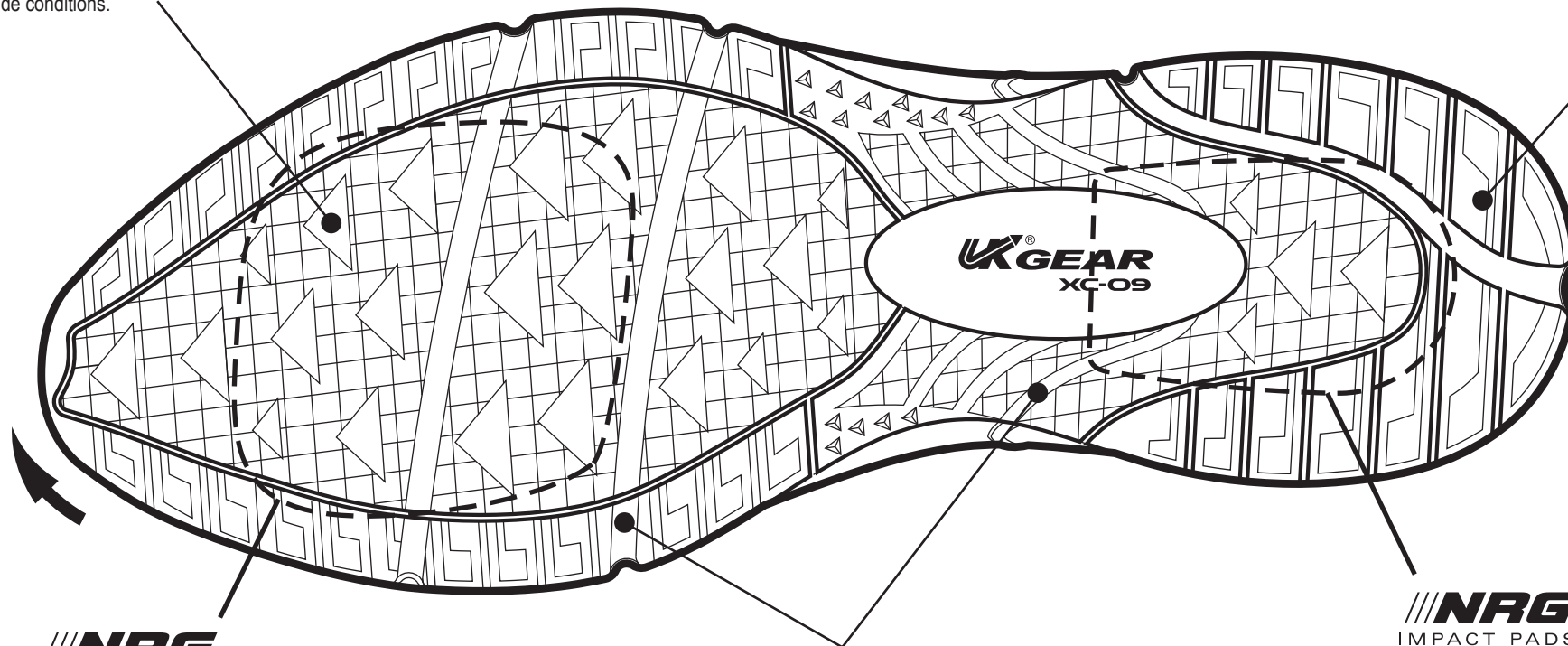


TECHNICAL ZONE - Outsole View

**Directional Traction Lugs:**  
Lightweight & durable carbon rubber for grip in ALL outside conditions.

**Highly Durable Carbon Rubber Sole:**  
Using deep traction lugs, non-marking and easy clean. Ideally suited for both road and off road running.

**Structured Landing Area:**  
Lessens heel impact.



**NRG**  
REACTOR PADS

(Inside) Highly-responsive technical FOREFOOT compound inlaid to compliment you foots Natural Energy Return during 'toe-off'.

**BIO+**  
**flex**  
TECHNOLOGY

Anatomically aligned grooves that echo the natural movements of the foot.

**NRG**  
IMPACT PADS

(Inside) Super-absorption blown HEEL compound with a unique molecular structure that gives sustained cushioning, inlaid to minimise impact through the body.